

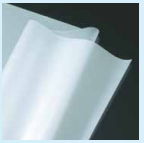
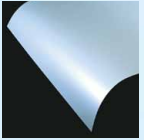
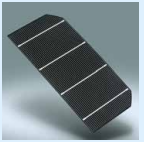
PHOTOVOLTAIC MODULES

MLE Series

PV-MLE265HD 265Wp

PV-MLE260HD 260Wp

PV-MLE255HD 255Wp



SOLID PRODUCTS, SOLID COMPANY.

ADVANCED TECHNOLOGY

- Low-loss, half-cut cells
- 4 busbar monocrystalline cells
- Proprietary cell surface texturing process for greater light absorption
- Anti-reflective glass
- Optimum tab thickness
- Lead-free solder connections
- Selective emitter technology

LONG RELIABILITY

- Outstanding durability and protection against the elements allows the module to be installable even in high-saline areas*
- Stronger improved frame allows the module to be fastened using the short frame sides
- Passed IEC static load test of 5400Pa
- Frame has a protective double layer of corrosion-resistant coating
- 4-layer protective junction box
- 10 year product warranty

*Excluding areas in which the module is directly exposed to salt water.

MITSUBISHI ELECTRIC QUALITY

- Highly automated production lines ensure a stable level of high quality for every module
- Cells are matched for uniformity before module assembly
- Every single module is sorted and labeled for positive tolerance only
- Our 25 year premium warranty covers 93% of the nominal output for the first 10 years, then 80% for the remaining 15 years
- Warranties and customer service all backed by one of the largest and most stable electronics manufacturers in the world



SPECIFICATIONS SHEET

Model name	PV-MLE255HD	PV-MLE260HD	PV-MLE265HD
Cell type	Monocrystalline silicon, 78mm x 156mm		
Number of cells	120 cells		
Performance at STC			
Maximum power rating (Pmax)	255W	260W	265W
Warranted minimum Pmax	255.0W	260.0W	265.0W
Tolerance of Pmax		-0 / +5%	
Open circuit voltage (Voc)	37.8V	38.0V	38.2V
Short circuit current (Isc)	8.89A	8.98A	9.08A
Maximum power voltage (Vmp)	31.2V	31.4V	31.7V
Maximum power current (Imp)	8.18A	8.29A	8.38A
Performance at NOCT (at 800W/m ²)			
Maximum power rating [Pmax]	185W	189W	192W
Open circuit voltage [Voc]	34.5V	34.7V	34.9V
Short circuit current [Isc]	7.19A	7.27A	7.35A
Maximum power voltage [Vmp]	28.0V	28.2V	28.4V
Maximum power current [Imp]	6.60A	6.69A	6.76A
Normal operating cell temperature (NOCT)*	45.7 °C		
Maximum system voltage	600V (UL), 1000V (IEC)		
Fuse rating	15A		
Dimensions	1625x1019x46mm (64.0x40.1x1.81 inches)		
Weight	20kg (44lbs.)		
Output terminal	(+) 800mm / (-) 1250mm with SMK (PV-03) connector		
Module efficiency	15.4%	15.7%	16.0%
Packing condition	2 modules per carton		
Certificates	IEC 61215 2nd ed., IEC 61730, UL1703		

*Measured at 800W/m², ambient temp. 20°C, wind speed 1m/s

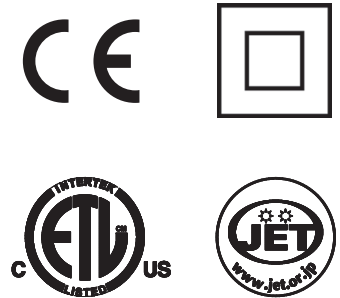
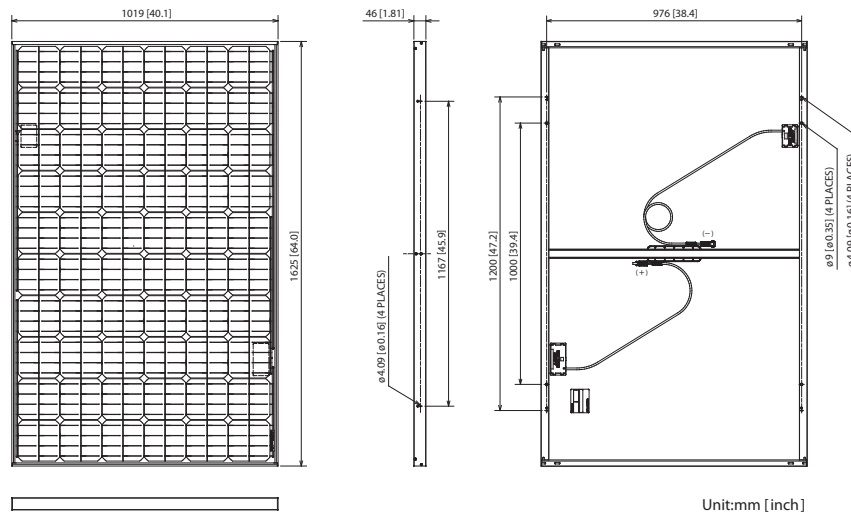
Temperature Coefficient

α (Isc) 0.056%/°C

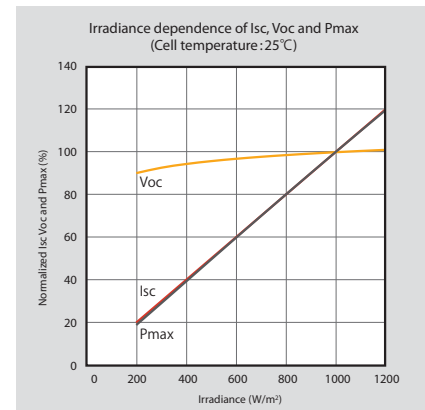
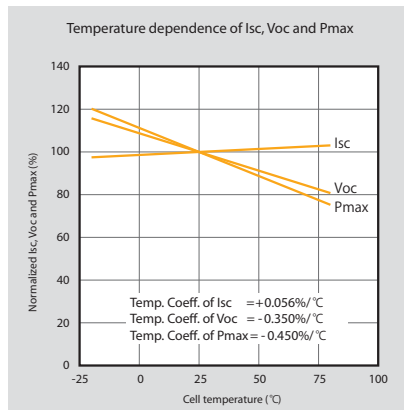
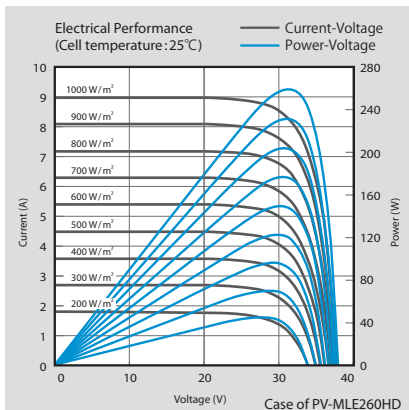
β (Voc) -0.350%/°C

γ (Pmax) -0.450%/°C

DRAWINGS AND DIMENSIONS



ELECTRICAL CHARACTERISTICS



MITSUBISHI ELECTRIC ASIA PTE LTD

307 ALEXANDRA ROAD, MITSUBISHI ELECTRIC BUILDING, SINGAPORE 159943

Phone: +65-6470 2601 FAX: +65-6476 0590

<http://www.MitsubishiElectric.com.sg>