



For Your *Luxury*

Mitsubishi Electric Refrigerators

Designed and engineered in the pursuit of excellence, our refrigerators have been developed with superior food preservation technologies and tested with uncompromising precision. This results in a range of feature driven refrigerators that are specially designed to keep food fresh as nature intended.





# Contents

## FEATURES

- Smart Auto Neuro Inverter
- Smart Cube
- Compartments and Sensors
- Anti-Bacteria Food Liner
- Anti-Mould Door Gaskets
- Washable Automatic Ice Maker
- Supercool Chilling Case
- Supercool Freezing
- Soft Freezing
- Hot Freezing
- Vitamin Factory



## FEATURES



**NEURO  
INVERTER**

### Smart Auto Neuro Inverter

Increase energy efficiency according to your family's lifestyle.



Imagine a refrigerator that learns your household's daily usage patterns. Powered by an intelligent AI-supported Neuro Inverter, the fridge optimises its performance based on how frequently the doors are opened at different times of the day — helping to reduce unnecessary energy use. Activate Eco Mode, an AI-enabled feature designed to further enhance energy efficiency and help lower electricity bills. The Eco Mode indicator lights up when activated, and when all compartments are set to Eco Mode, energy savings of up to approximately 10% can be achieved.

The degree of energy saving is determined by the operating status and the frequency of door opening and closing, and clearly indicated by a star symbol. This makes energy saving more tangible and helps raise family environmental awareness.

**Standard  
Operation**



**Energy Saving  
5-10%**

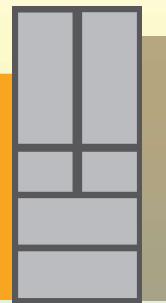


**Energy Saving  
10% or More**



#### Early Morning

Ambient temperature adjusts quickly to frequent opening of door



#### Late Morning

Less opening of door will result in 'quieter' operation



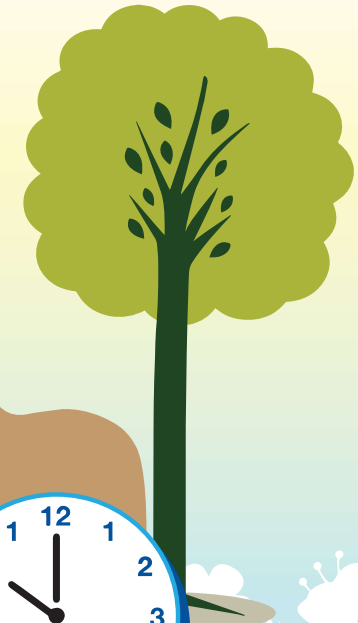
#### Evening

After grocery shopping, there's a lot to store in the refrigerator which requires more operations



#### Night

Best time for ice defrosting



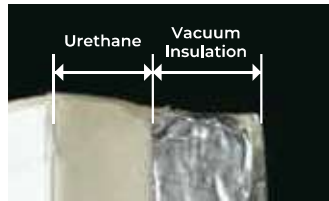
## FEATURES



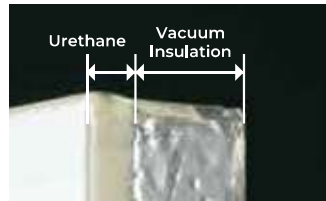
### Smart Cube

Large capacity with high efficiency.

Smart Cube features a slim, high-performance heat-insulating structure that reduces the thickness of the doors and exterior panels without compromising insulation. By incorporating advanced vacuum insulation panels, the refrigerator improves energy efficiency while providing more usable space for everyday food storage. As a result, the fridge's external width takes up less space, with no reduction in usable internal space, allowing for better space utilisation alongside enhanced insulation and energy savings.



2012 Product: MR-RX52T  
SMART CUBE (Not Used)

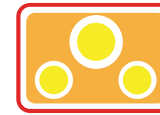


MR-WZ61K  
ADVANCED SMART CUBE (Used)



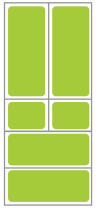
Vacuum insulation panels with excellent insulation properties are used to reduce the thickness of door and exterior panels.

Compared to conventional models, Smart Cube comes with thinner doors and exterior panels thereby offering a more spacious interior.



### Compartments & Sensors

Creating an ideal environment for food storage.



All compartments are completely sealed and equipped with a temperature sensor that actively monitors and adjusts temperature and airflow to prevent odour transfer, ensuring food is stored in its ideal environment.



#### Fresh Air Filter

The Fresh Air Filter acts as an antibacterial<sup>\*1</sup> and deodorising agent, keeping food fresh and hygienic in the fridge.

- Humidity Sensor
- Temperature Sensor
- Door Opening & Closing Sensor
- Ambient Sensor
- Defrost Sensor

全室独立おまかせA.I.

<sup>\*1</sup> (Testing laboratory) General incorporated association Tokyo-to-Shokuhin Eisei Kyokai. (Testing method) JIS Z 2801 Film adhesion method. (Antibacterial method) Anti-bacteria filter. (Name of covered area) Filter catalyst. (Result) Removed 99.9%

## FEATURES



### Anti-Bacteria Food Liner & Anti-Mould Gaskets

Additional hygienic barrier offers protection against bacteria.

The food liner of the refrigerator is coated with special silvery inorganic antibacterial material, which eliminates bacteria and prevents its growth, thus providing a safer environment for storing food.

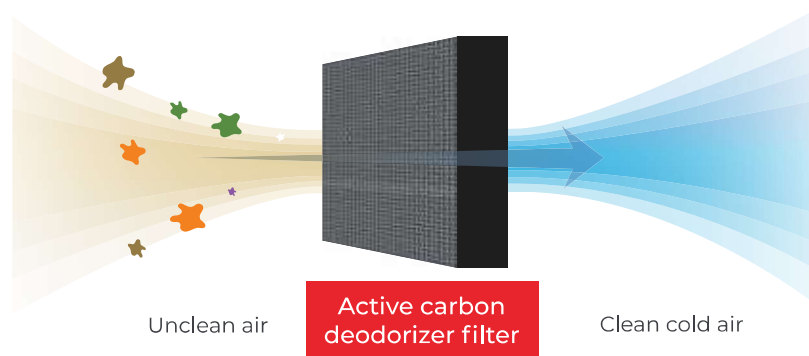


#### Hygienic interior with Antibacterial material

The food liner is made of "Polimax Banbax", a polymer material which is mixed with Nano Zinc Oxide to prevent bacterial growth and keep good hygiene. The material passed the test standard, JIS Z 2801.

#### Active Carbon Deodorizer

The active carbon deodorizer filter sterilizes and deodorizes the cold air circulating inside the cabinet to preserve food in clean air.



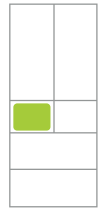
#### Did you know?

Our fridges incorporate Anti-Mould Door Gasket



### Washable Automatic Ice Maker

Enjoy clean & tasty ice everyday.



With the antibacterial\*<sup>1</sup> ice tray, you can use all types of mineral water for speedy ice-making, allowing you to enjoy clean and tasty ice with peace of mind. All components — including the ice tray, pump, water supply pipe, and filter — are detachable for easy cleaning.



\*<sup>1</sup> (Testing laboratory) General incorporated association Kaken test centre. (Testing method) JIS Z 2801 Film adhesion method. (Antibacterial method) Antibacterial agent. (Name of covered area) Ice tray. (Result) Removed 99.9%.

\*<sup>2</sup> Reduction rate comparison of chlorine density in tap water. The initial chlorine density in tap water is about 0.6mg/L. After passing through the filter, it is about 0.3mg/L (our research).

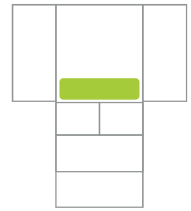
\*<sup>3</sup> When the filter is clogged or broken, replacement is necessary.

## FEATURES



# Supercool Chilling Case

Storing below freezing point keeps meat and fish fresh longer.



Freezing ruptures the cell walls of meat, causing it to lose up to 70% of its flavour and texture. With our Supercool Chilling Case, fish and meat can now be kept fresh for up to 10 days at a temperature of between -3°C and 0°C without freezing! With no thawing required, your meal can be ready in minutes. This makes cooking a real breeze!

### Recommended Storage Periods

◆ The recommended storage periods are based on Mitsubishi Electric's in-house testing. Actual storage time and food discolouration may vary depending on the type of food, quantity, and its freshness at the time of refrigeration.

Approximately 10 days <sup>*1</sup> <sup>*2</sup>	Approximately 5 days <sup>*1</sup> <sup>*3</sup>	Approximately 3 days <sup>*1</sup> <sup>*4</sup>
Ground Beef Sirloin Steak Chicken Thigh Pork Belly Pork Tenderloin	Horse Mackerel Sardines Saury	Tuna Ground Tuna Squid Prawn

**Chilled Case**  
after 8 days

**Supercool Chilling Case**  
Reduces discolouration by approximately **11%**<sup>\*5</sup>  
Ground beef in 8 days



**Preserve freshness for a longer period even if you buy in large quantities.**

**Buy food for the weekend and store it in the Supercool Chilling Case!**

<sup>\*1</sup> It is judged by looking at the K value, viable bacteria count, oxidation and other factors. Supercool chilling case is set as supercool chilling mode in MR-WX71Y. Refrigerator and chilled case comparisons are based on the "Mid" setting of refrigerator room in MR-JX61X (2013 model). Supercool chilling case can be set as supercool chilling mode or chilling mode. If supercool chilling case is not set as supercool chilling mode, storage period is that of chilling mode.

<sup>\*2</sup> Ambient temperature is 25°C, viable bacteria count of ground beef in each room (unit: CFU/g), against initial value of 6x10<sup>6</sup>, supercool chilling 7 days: 2x10<sup>6</sup>, chilled 4 days: 3x10<sup>6</sup>, refrigerator 3 days: 1x10<sup>7</sup>. In general, viable bacteria count of 10<sup>7</sup> is considered as the initial stage of decomposition.

<sup>\*3</sup> (Testing laboratory) Nippon Ham Kabushikikaisha Chuo Kenkyuusho. Ambient temperature is 25°C, K value of pacific saury in each room, against initial value 29%, supercool chilling 5 days: 43%, chilled 3 days: 40%, refrigerator 2 days: 42%. K value is the index to mainly show the freshness of fish and 60% and above is considered as initial stage of decomposition.

<sup>\*4</sup> (Testing laboratory) Nippon Ham Kabushikikaisha Chuo Kenkyuusho. Ambient temperature is 25°C, K value of tuna in each room, against initial value 12%, supercool chilling 3 days: 20%, chilled 2 days: 19%, refrigerator 1 day: 17%. K value is the index to mainly show the freshness of fish and 20% and below is considered good for sashimi.

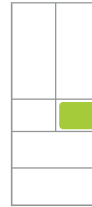
<sup>\*5</sup> Ambient temperature is 25°C. Supercool chilling is set as Supercool chilling mode, chilled case is set as middle setting. 110g of ground meat is wrapped and stored for 7 days to compare the colour change (fading of red colour Δa) Supercool chilling about -8.5, chilled about -9.5.

## FEATURES



## Supercool Freezing

What is Supercool Freezing Technology?

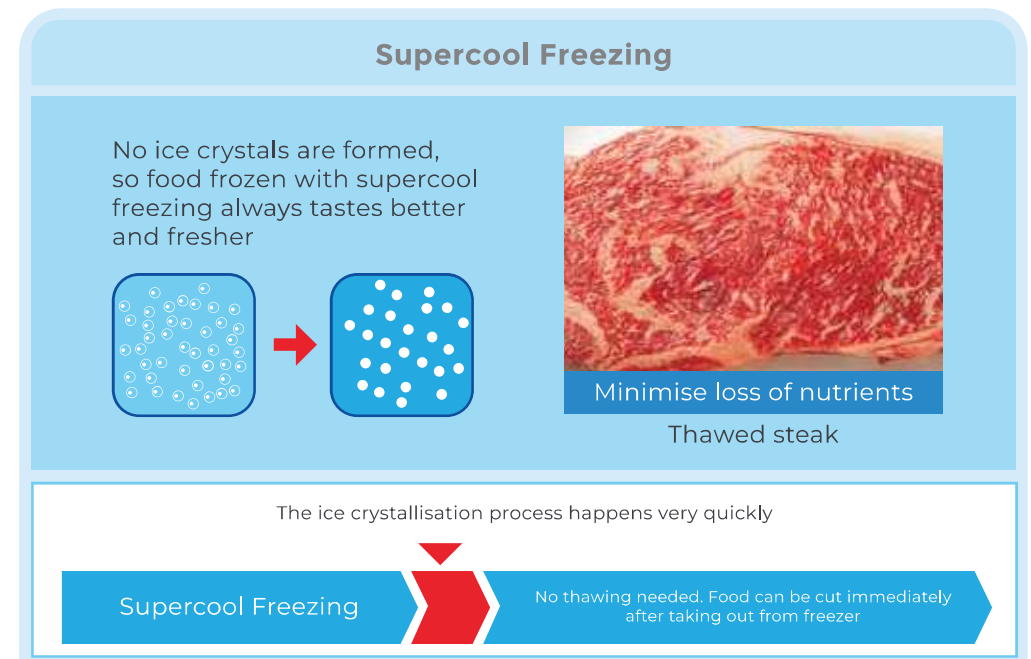
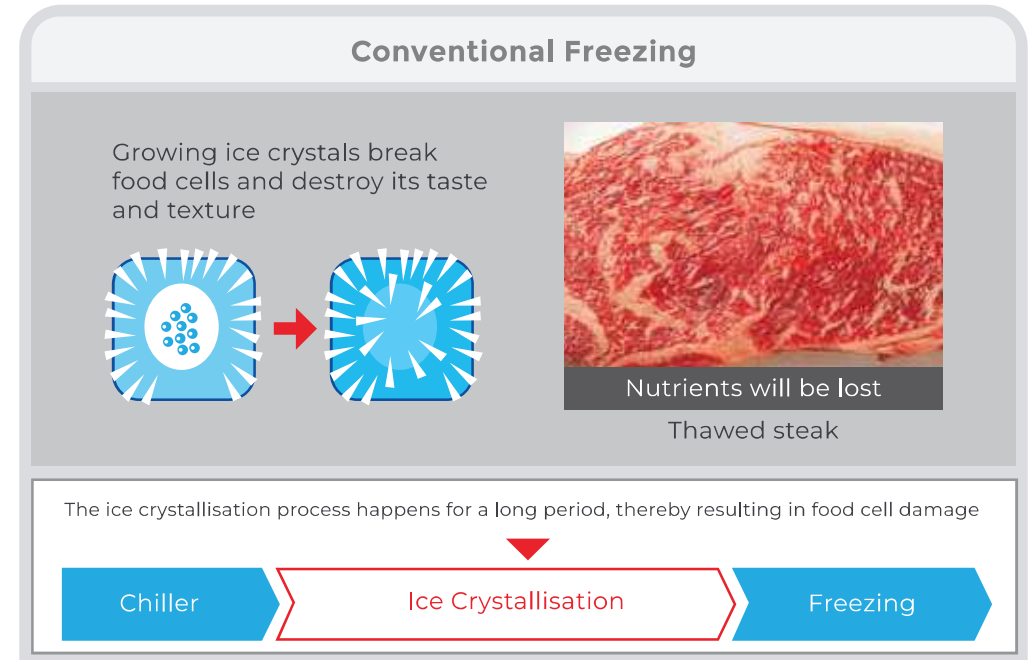


Supercool Freezing is the process of lowering the temperature of a liquid below its freezing point without it becoming a solid. With Supercool Freezing, no ice crystals are formed. This is why food frozen with Supercool Freezing always tastes better and fresher.

Mitsubishi Electric's Versa Compartment employs Supercool Freezing technology to cool food gently. With AI detection, the fridge senses the food's temperature and automatically selects the hot or soft freezing mode for optimal preservation.



*\*This image is for illustration purposes only*



## FEATURES



### Soft Freezing

Unique technology shortens cooking time and reduces food wastage.



By preserving food at a controlled temperature of  $-7^{\circ}\text{C}$ , Soft Freezing helps prevent food from premature deterioration while maintaining its texture and quality for up to 3 weeks.

#### Saves cooking time while reducing food wastage

Easy to cut even if the food is frozen

Faster cooking time

Meals prepared quickly!



"Soft frozen" minced meat



#### Take and use only what you need

Easy to scoop!

Easy preparations!

Easy to cut!



"Soft frozen" white sauce



"Soft frozen" chunk of meat

\*1 Storage period varies depending on the types of food and conditions.

\*2 Depending on the types, size and conditions of food, short period of defrost time may be necessary.

\*3 Loss rate of amino acid beef round: A (Normal Freezing): about 5% / B (Supercool Freezing): about 2.5%.

\*4 Patent 4253775. System which applies supercool phenomenon. As of Nov 24, 2015 (Our research).

\*5 Depending on the types, size and amount of food, supercool freezing result may vary. When you store food by piling up put the food that needs to be supercooled at the top position.



### Hot Freezing

Freeze freshly cooked food without cooling it down.



Hot freezing can work even for freshly cooked food with temperatures up to  $80^{\circ}\text{C}$ \*1. You can now afford to cook large quantities and freeze the leftovers almost immediately.

#### Using hot freezing, the food will retain 2/3 of its moisture\*2



The temperature sensor is able to detect the temperature of the food. So when you place hot food in the compartment, it will immediately detect and freeze the food rapidly.

temperature sensor



\*1 Hot freezing could raise energy consumption by about 15%. Keep a 10mm distance between food items. Please do not put food more than  $80^{\circ}\text{C}$  as it can cause deformation of the case.

\*2 Comparison of water loss rate in steamed rice. If hot steamed rice is wrapped and supercool-frozen: 2%, if room temperature steamed rice is wrapped and frozen: 6%.

## FEATURES

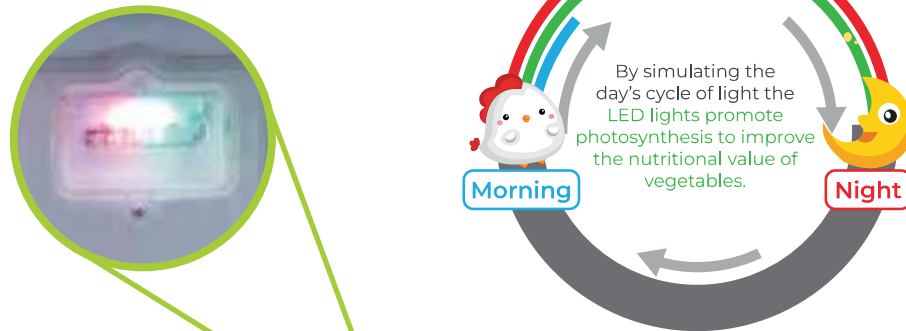


### Vitamin Factory

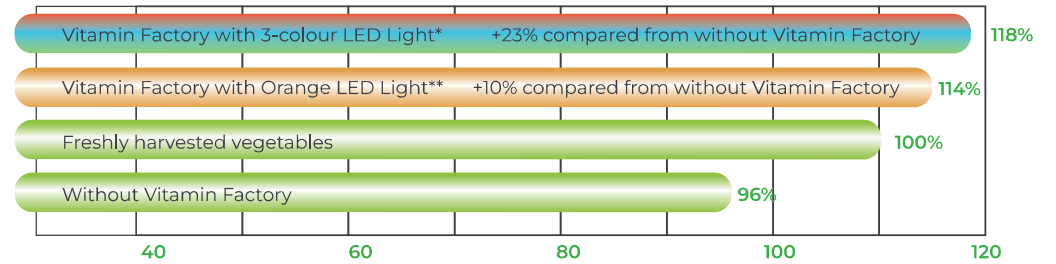
LED stimulates the photosynthesis process to keep vegetables fresh longer.

The use of LED sunlight promotes photosynthesis in the vegetable compartment. Chlorophyll remains in an active state, resulting in an increase of Vitamin C which keeps vegetables fresh and crisp. The orange LED light used in the Hybrid series can increase Vitamin C by up to 10% while the 3-colour LED lights in the Folio series can raise it by up to 23%.

Vitamin Factory acts on chlorophyll in vegetables. It stimulates the food manufacturing process (photosynthesis) keeping vegetables greener and fresher.



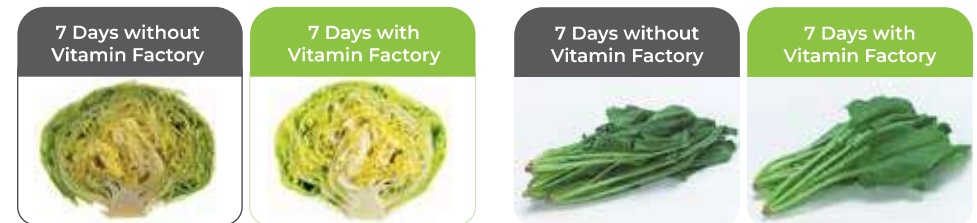
### Comparing the changes in the amount of vitamin C (after 3 days in the refrigerator)



Findings based on cabbage preserved in the vegetable compartment under LED light over a 3-day period at a temperature of approximately 5°C and humidity of approximately 90%. Results will vary depending on the original state of the vegetables. \*Found in all Folio series except MR-WX70G. \*\*Found in Hybrid series except MR-FC34EP & Folio MR-WX70C only.

### Increase Vitamin C

Effective for vegetables rich in chlorophyll, such as leafy greens. Not all vegetables are suitable. Helps stimulate the natural process of photosynthesis.



### Easy Drawing

Attached with easy rollers, (greaseless hard bearings), drawing out the compartment is easy even with a full load.



### Retain Moisture

The vegetable drawer is designed to maintain a stable temperature, prevent cold air leakage, and retain moisture, keeping fruits and vegetables fresh and crisp for longer.



\*1 Ambient temperature is 20°C. Cabbage is kept for 7 days without shrink wrap in the vegetable compartment. Compartment remained closed for 7 days. Result varies depending on the types of vegetables, amount and conditions.  
\*2 Vegetable room is set at 'Keep vegetable Moist' mode, kept at about 3-4°C.



# FOLIO

*Series*

---

MR-WX70G-P

MR-WZ61K-P

MR-WZ55K-P

MR-WX47LG-P

MR-B46G-P

FOLIO SERIES



# MR-WX70G-P

Multi Door Refrigerator

Net Capacity 700L\*

800(W) x 1821(H) x 738(D) mm



## Features

- Neuro Inverter
- Spacious Interior with Smart Cube Technology
- Independent Compartments
- Wide Chiller Case
- Supercool Chilling
- Tempered Glass Shelves
- Multi Airflow Cooling System
- LED Touch Panel
- Washable Automatic Ice Maker
- Supercool Freezing
- Hot & Soft Freezing
- Vitamin Factory with Orange LED Light
- Auto Door Closer
- Door Alarm



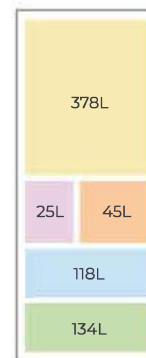
Glass White (W)



Glass Black (B)

## Compartment Capacity

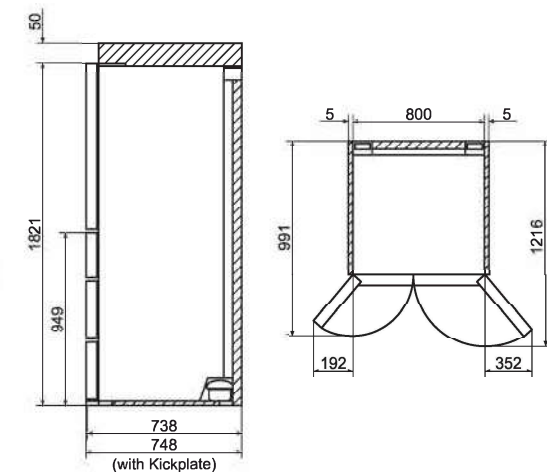
\*based on IEC62552:2015



### MR-WX70G-P

- Refrigerator Room
- Ice Room
- Supercool Freezing Room
- Freezer Room
- Vegetable Room

## Installation Dimension (mm)



FOLIO SERIES



# MR-WZ61K-P

Multi Door Refrigerator

Net Capacity 608L\*

685(W) x 1833(H) x 738(D) mm



## Features

- Smart Auto Neuro Inverter
- Advanced Smart Cube Technology
- Independent Compartments
- Wide Chiller Case
- Wide Supercool Chilling
- Tempered Glass Shelves
- Multi Airflow Cooling System
- LED Touch Panel
- Washable Automatic Ice Maker
- Supercool Freezing
- Hot & Soft Freezing
- Vitamin Factory with 3 Colour LED Light
- Auto Door Closer
- Door Alarm



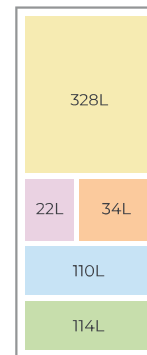
Glass White (W)

Glass Greige (C)

Glass Black (B)

## Compartment Capacity

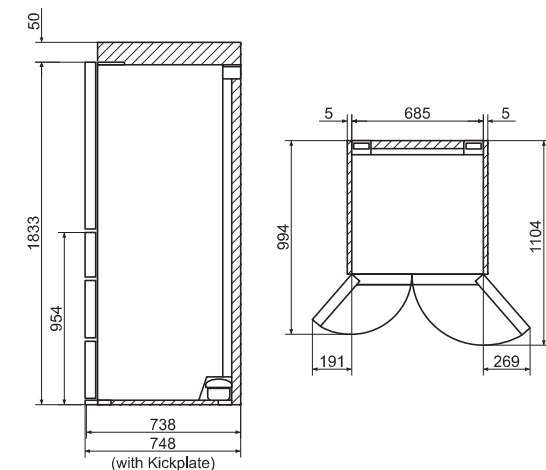
\*based on IEC62552:2015



## MR-WZ61K-P

- Refrigerator Room
- Ice Room
- Supercool Freezing Room
- Freezer Room
- Vegetable Room

## Installation Dimension (mm)



FOLIO SERIES



# MR-WZ55K-P

Multi Door Refrigerator

Net Capacity 547L\*

650(W) x 1833(H) x 699(D) mm



## Features

- Smart Auto Neuro Inverter
- Advanced Smart Cube Technology
- Independent Compartments
- Wide Chiller Case
- Wide Supercool Chilling
- Tempered Glass Shelves
- Multi Airflow Cooling System
- LED Touch Panel
- Washable Automatic Ice Maker
- Supercool Freezing
- Hot & Soft Freezing
- Vitamin Factory with 3 Colour LED Light
- Auto Door Closer
- Door Alarm

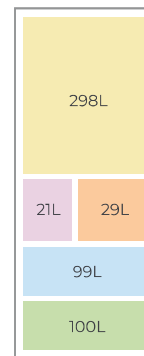


Glass White (W)

Glass Greige (C)

## Compartment Capacity

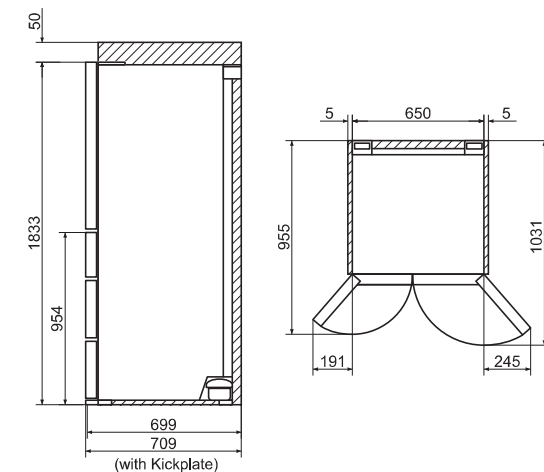
\*based on IEC62552:2015



### MR-WZ55K-P

- Refrigerator Room
- Ice Room
- Supercool Freezing Room
- Freezer Room
- Vegetable Room

## Installation Dimension (mm)



FOLIO SERIES



# MR-WX47LG-P

Multi Door Refrigerator

Net Capacity 470L\*

650(W) x 1696(H) x 699(D) mm



## Features

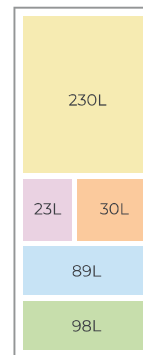
- Neuro Inverter
- Spacious Interior with Smart Cube Technology
- Independent Compartments
- Wide Chiller Case
- Supercool Chilling
- Tempered Glass Shelves
- Multi Airflow Cooling System
- LED Touch Panel
- Washable Automatic Ice Maker
- Supercool Freezing
- Hot & Soft Freezing
- Vitamin Factory with 3 Colour LED Light
- Auto Door Closer
- Door Alarm



Glass Beige (F)

## Compartment Capacity

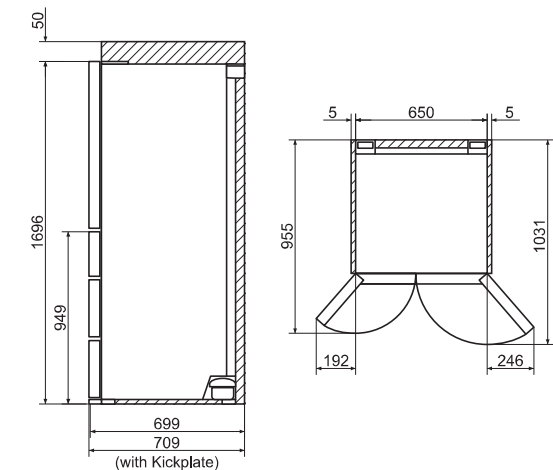
\*based on IEC62552:2015



## MR-WX47LG-P

- Refrigerator Room
- Ice Room
- Supercool Freezing Room
- Freezer Room
- Vegetable Room

## Installation Dimension (mm)



FOLIO SERIES



# MR-B46G-P

Multi Door Refrigerator

Net Capacity 455L\*  
600(W) x 1821(H) x 699(D) mm



## Features

- Neuro Inverter
- Spacious Interior with Smart Cube Technology
- Independent Compartments
- Wide Chiller Case
- Supercool Chilling
- Tempered Glass Shelves
- Multi Airflow Cooling System
- LED Touch Panel
- Washable Automatic Ice Maker
- Supercool Freezing
- Hot & Soft Freezing
- Vitamin Factory with 3 Colour LED Light
- Door Alarm

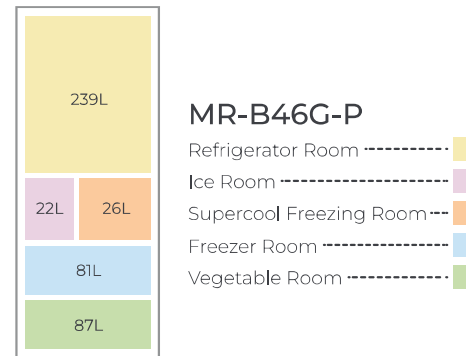
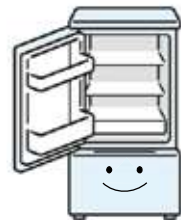


Glass White (W)

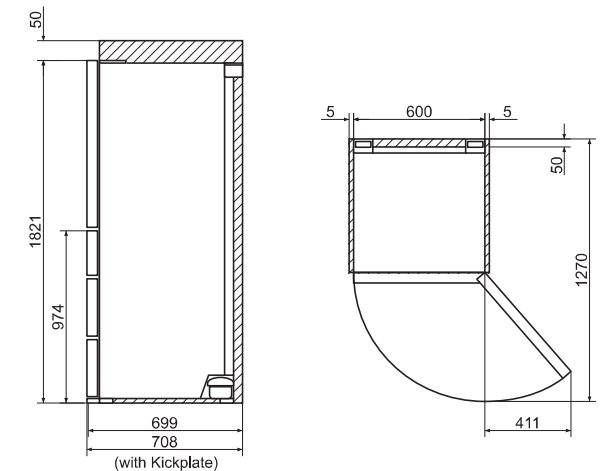
## Compartment Capacity

\*based on IEC62552:2015

**Did you know?**  
Left hinge opening is also available!



## Installation Dimension (mm)





# HYBRID

## *Series*

---

MR-LX55EY-P

MR-CGX56EX-P

MR-CGX46EX-P

MR-CGX41EX-P

MR-V50EX-P

MR-HGS52EX-P

MR-F62EX-P

MR-FS51EX-P

MR-FX47EX-P

MR-FC34EX-P



## Automatic Door Closer

Increase energy efficiency according to your family's lifestyle.

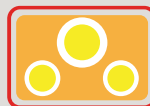


## Only Mitsubishi Electric Fridges offers:



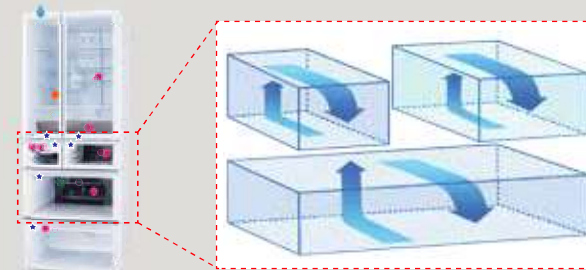
### Supercool Freezing

Preserve flavor and freshness, and allow for immediate use without thawing — effectively and efficiently reducing cooking time.



### Isolated Compartments & Sensors

Creating an ideal environment for food storage.



All rooms are separated so that cool air circulates in each individual room



### Vitamin Factory

LED stimulates the photosynthesis process to keep vegetables fresh longer.

Keep fresh and hydrated!



### Washable Automatic Ice Maker

Enjoy clean & tasty ice everyday.

Completely washable!



Predicts high ice demand and activates rapid ice-making in advance

## HYBRID SERIES



# MR-LX55EY-P

4 Door Bottom Freezer Refrigerator

Net Capacity 442L\*

699(W) x 1798(H) x 723(D) mm



### Features

- Neuro Inverter
- Anti Mould Gasket
- Wide Supercool Chilling
- Tempered Glass Shelves
- Multi Airflow Cooling System
- Washable Automatic Ice Maker
- Vitamin Factory with Orange LED Light
- Door Alarm
- Deodorizer Filter
- Rapid Freeze
- Two-Way Flexi Shelf



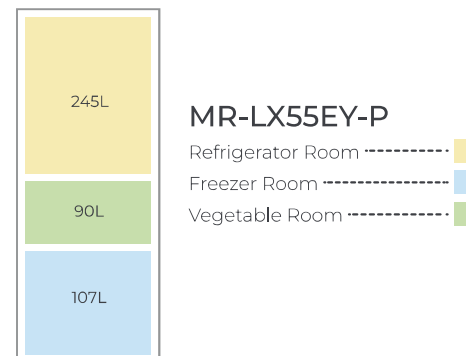
Glass White  
(GWH)

Glass Dark Silver  
(GDS)

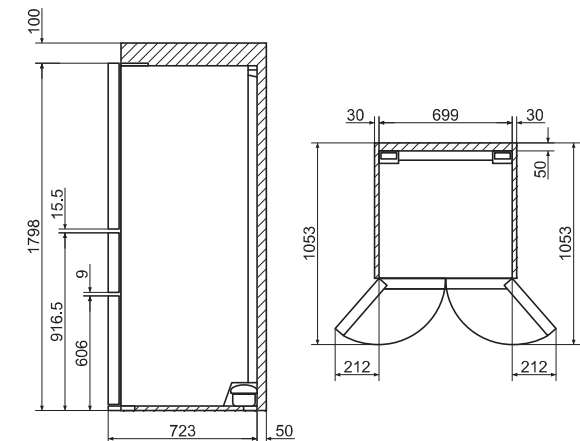
Glass Black  
(GBK)

### Compartment Capacity

\*based on IEC62552:2015



### Installation Dimension (mm)



## HYBRID SERIES



# MR-CGX56EX-P

3 Door Bottom Freezer Refrigerator

Net Capacity 450L\*

699(W) x 1798(H) x 709(D) mm



### Features

- Neuro Inverter
- Anti Mould Gasket
- Supercool Chilling
- Tempered Glass Shelves
- Multi Airflow Cooling System
- Washable Automatic Ice Maker
- Vitamin Factory with Orange LED Light
- Door Alarm
- Two-Way Flexi Shelf



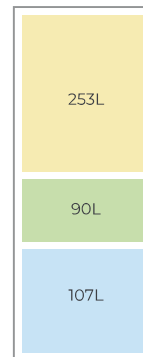
Glass White  
(GWH)



Glass Black  
(GBK)

### Compartment Capacity

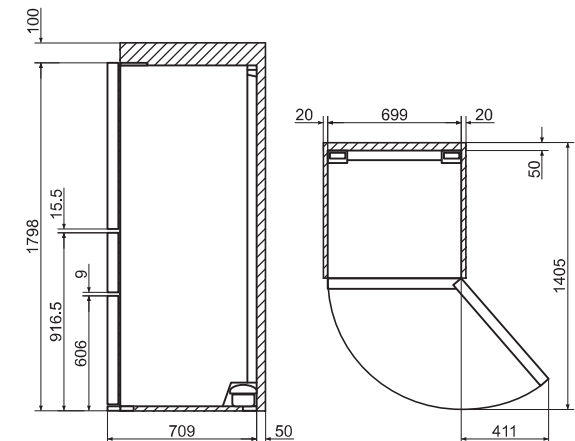
\*based on IEC62552:2015



### MR-CGX56EX-P

- Refrigerator Room
- Freezer Room
- Vegetable Room

### Installation Dimension (mm)



HYBRID SERIES



# MR-CGX46EX-P

3 Door Bottom Freezer Refrigerator

Net Capacity 363L\*

600(W) x 1820(H) x 660(D) mm



## Features

- Neuro Inverter
- Anti Mould Gasket
- Supercool Chilling
- Tempered Glass Shelves
- Multi Airflow Cooling System
- Washable Automatic Ice Maker
- Vitamin Factory with Orange LED Light
- Door Alarm
- Two-Way Flexi Shelf

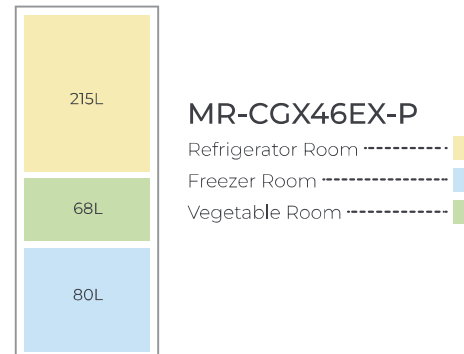


Glass White (GWH)

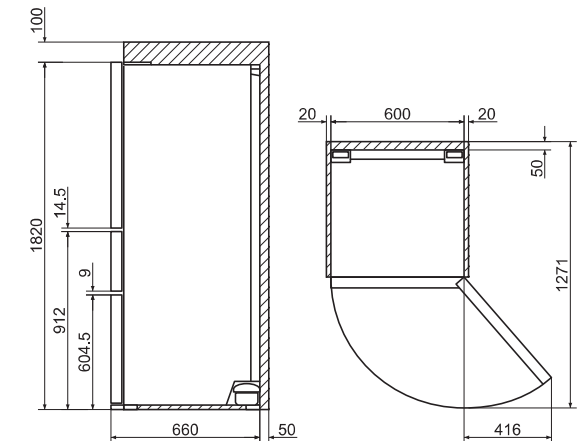
Glass Brown (GBR)

## Compartment Capacity

\*based on IEC62552:2015



## Installation Dimension (mm)



HYBRID SERIES



# MR-CGX41EX-P

3 Door Bottom Freezer Refrigerator

Net Capacity 328L\*

600(W) x 1698(H) x 660(D) mm



## Features

- Neuro Inverter
- Anti Mould Gasket
- Supercool Chilling
- Tempered Glass Shelves
- Multi Airflow Cooling System
- Washable Automatic Ice Maker
- Vitamin Factory with Orange LED Light
- Door Alarm
- Deodorizer Filter
- Two-Way Flexi Shelf

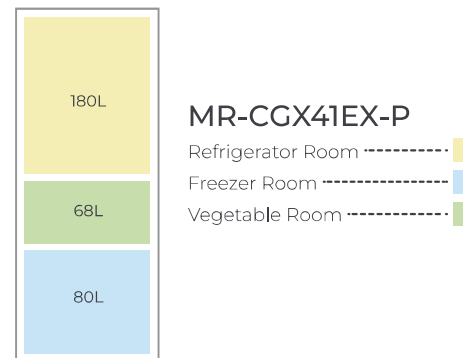


Glass White (GWH)

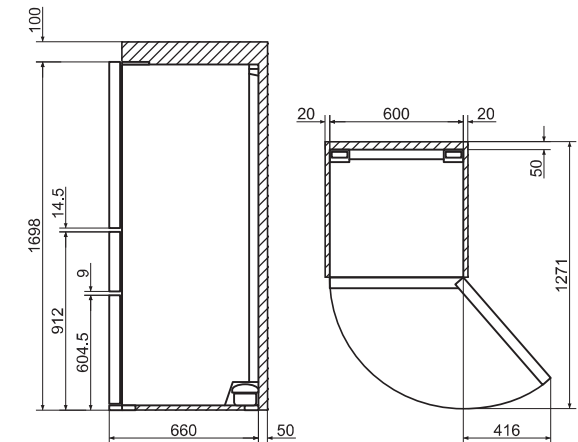
Glass Brown (GBR)

## Compartment Capacity

\*based on IEC62552:2015



## Installation Dimension (mm)



## HYBRID SERIES



# MR-V50EX-P

3 Door Top Freezer Refrigerator

Net Capacity 414L\*

686(W) x 1801(H) x 700(D) mm



### Features

- Neuro Inverter
- Anti Mould Gasket
- Supercool Chilling
- Tempered Glass Shelves
- Surround Cooling
- Vitamin Factory with Orange LED Light
- Door Alarm
- Revolving Ice Tray
- Anti Bacteria Food Liner
- Minus Ion



Stainless Steel  
(ST)



Shiny Black  
(SB)

### Compartment Capacity

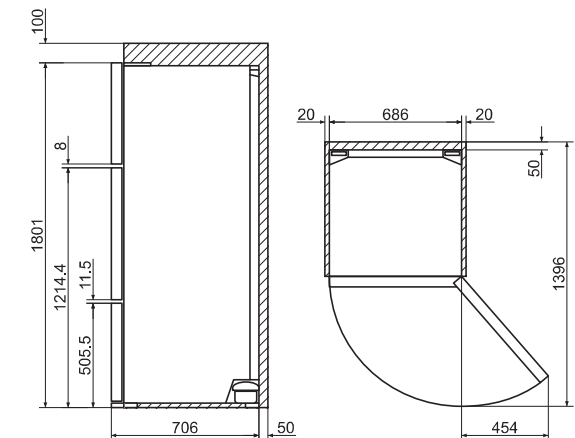
\*based on IEC62552:2015



### MR-V50EX-P

- Refrigerator Room
- Freezer Room
- Vegetable Room

### Installation Dimension (mm)



## HYBRID SERIES



# MR-HGS52EX-P

2 Door Bottom Freezer Refrigerator

Net Capacity 421L\*

699(W) x 1720(H) x 720(D) mm



### Features

- Neuro Inverter
- Anti Bacteria Food Liner
- Anti Mould Gasket
- Soft Freezing
- Tempered Glass Shelves
- Multi Airflow Cooling System
- Vitamin Factory with Orange LED Light
- Filter with Blue Catalyst
- Door Alarm
- Washable Automatic Ice Maker



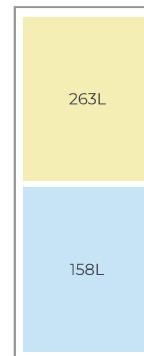
Glass White  
(GWH)



Glass Black  
(GBK)

### Compartment Capacity

\*based on IEC62552:2015

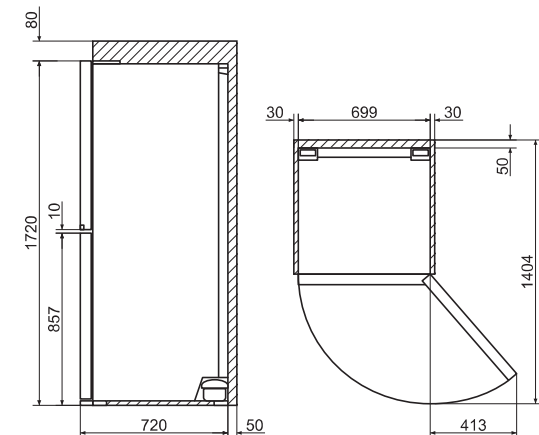


### MR-HGS52EX-P

Refrigerator Room

Freezer Room

### Installation Dimension (mm)



## HYBRID SERIES

# MR-F62EX-P

2 Door Top Freezer Refrigerator

Net Capacity 505L\*

751(W) x 1777(H) x 795(D) mm



### Features

- Neuro Inverter
- Anti Bacteria Food Liner
- Anti Mould Gasket
- Tempered Glass Shelves
- Multi Airflow Cooling System
- Vitamin Factory with Orange LED Light
- Door Alarm
- Minus Ion
- Revolving Ice Tray

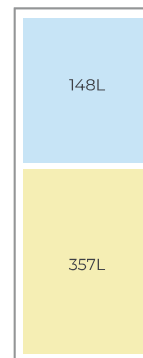


Stainless Steel  
(ST)

Brown  
(BRW)

### Compartment Capacity

\*based on IEC62552:2015

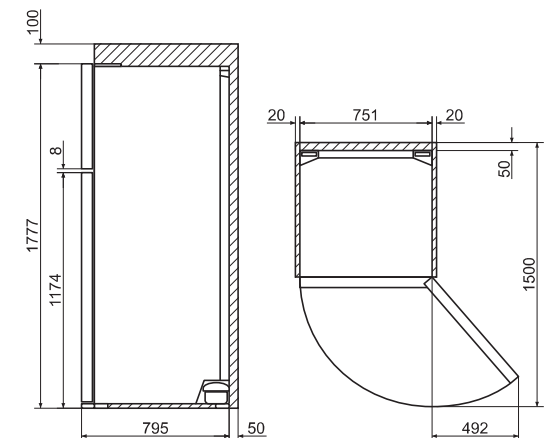


### MR-F62EX-P

Refrigerator Room

Freezer Room

### Installation Dimension (mm)



## HYBRID SERIES



# MR-FS51EX-P

2 Door Top Freezer Refrigerator

Net Capacity 413L\*

699(W) x 1820(H) x 735(D) mm



### Features

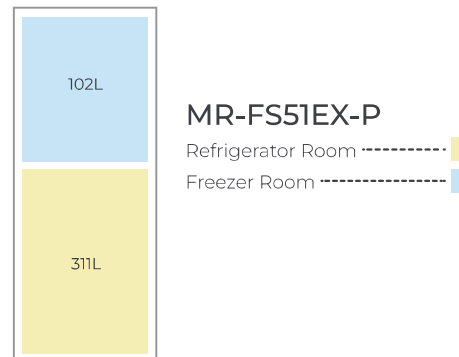
- Neuro Inverter
- Anti Bacteria Food Liner
- Anti Mould Gasket
- Soft Freezer
- Tempered Glass Shelves
- Multi Airflow Cooling System
- Vitamin Factory with Orange LED Light
- Filter with Blue Catalyst
- Door Alarm
- Minus Ion
- Revolving Ice Tray



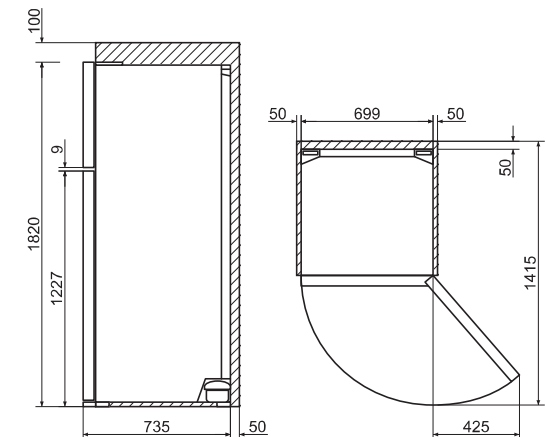
Silky Silver  
(SSL)

### Compartment Capacity

\*based on IEC62552:2015



### Installation Dimension (mm)



## HYBRID SERIES



# MR-FX47EX-P

2 Door Top Freezer Refrigerator

Net Capacity 376L\*

699(W) x 1720(H) x 720(D) mm



### Features

- Neuro Inverter
- Anti Bacteria Food Liner
- Anti Mould Gasket
- Tempered Glass Shelves
- Multi Airflow Cooling System
- Vitamin Factory with Orange LED Light
- Door Alarm
- Minus Ion
- Revolving Ice Tray

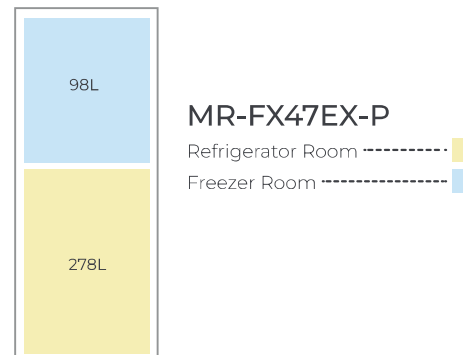


Glass White  
(GWH)

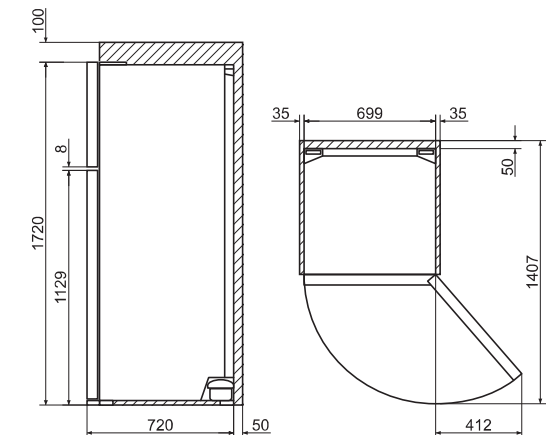
Glass Black  
(GBK)

### Compartment Capacity

\*based on IEC62552:2015



### Installation Dimension (mm)



## HYBRID SERIES



# MR-FC34EX-P

2 Door Top Freezer Refrigerator

Net Capacity 288L\*

555(W) x 1693(H) x 662(D) mm



### Features

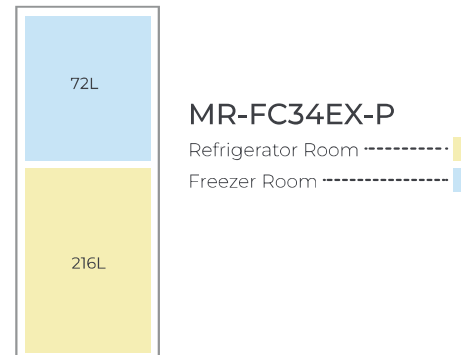
- Neuro Inverter
- Anti Bacteria Food Liner
- Anti Mould Gasket
- Tempered Glass Shelves
- Fan Cooling
- Vitamin Factory with Orange LED Light
- Revolving Ice Tray
- Deodorizer Filter



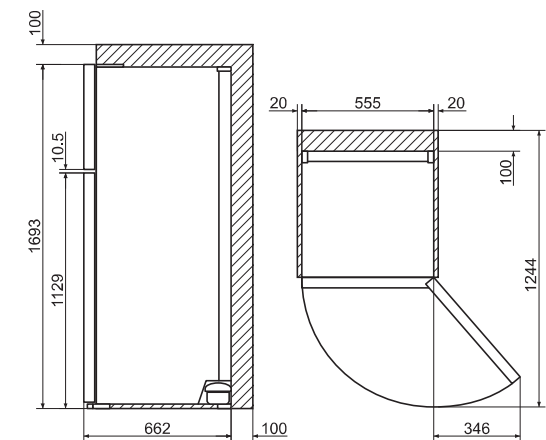
Matte Black  
(MB)

### Compartment Capacity

\*based on IEC62552:2015



### Installation Dimension (mm)



# Specifications

## Folio Series



MODEL			MR-WX70G-P	MR-WZ61K-P	MR-WZ55K-P	MR-WX47LG-P	MR-B46G-P
Capacity (Litre)	Freezer Room	Net	118	110	99	89	81
	Refrigerator Room	Net	378	328	298	230	239
	Vegetable Room	Net	134	114	100	98	87
	Supercool Freezing Room	Net	45	34	29	30	26
	Ice Making Room	Net	25	22	21	23	22
	Total	Net	700	608	547	470	455
	Weight (kg)	Net	142	127	117	112	104

Dimension (mm)	Width	800	685	650	650	600
	Height	1821	1833	1833	1696	1821
	Depth	738	738	699	699	699

Cabinet Colours	Class White   Class Black	Class White   Class Greige   Class Black	Class White   Class Greige	Class Beige	Class White
Cooling System	Multi Airflow	Multi Airflow	Multi Airflow	Multi Airflow	Multi Airflow
Vitamin Factory	•	•	•	•	•
Auto Ice Maker	•	•	•	•	•
Washable Water Supply Parts	•	•	•	•	•
Supercool Chilling	•	•	•	•	•
Supercool Freezing	•	•	•	•	•
Soft Freezing	•	•	•	•	•
Hot Freezing	•	•	•	•	•
Neuro Inverter	•	•	•	•	•
ECO Mode	•	•	•	•	•
Tempered Glass Shelf	•	•	•	•	•
LED Lighting	•	•	•	•	•
Auto Door Closer	•	•	•	•	•
Door Alarm	•	•	•	•	•

# Specifications

## Hybrid Series



MODEL			MR-LX55EY-P	MR-CGX56EX-P	MR-CGX46EX-P	MR-CGX41EX-P	MR-V50EX-P
Capacity (Litre)	Freezer Room	Net	107	107	80	80	107
	Refrigerator Room	Net	245	253	215	180	198
	Vegetable Room	Net	90	90	68	68	109
	Total	Net	442	450	363	328	414
	Weight (kg)	Net	96	91	80	76	78

Dimension (mm)	Width	699	699	600	600	686
	Height	1798	1798	1820	1698	1801
	Depth	723	709	660	660	700

Cabinet Colours	Glass White   Glass Dark Silver   Glass Black	Glass White   Glass Black	Glass White   Glass Brown	Glass White   Glass Brown	Stainless Steel   Shiny Black
Cooling System	Multi Airflow	Multi Airflow	Multi Airflow	Multi Airflow	Surround Cooling
Vitamin Factory	•	•	•	•	•
Auto Ice Maker	•	•	•	•	-
Neuro Inverter	•	•	•	•	•
Deodorizer Filter	•	•	•	•	•
Blue Catalyst Filter	-	-	-	-	-
Minus Ion	-	-	-	-	•
Tempered Glass Shelf	•	•	•	•	•
LED Lighting	•	•	•	•	•
Glass Door	•	•	•	•	-
Supercool Chilling	•	•	•	•	-
Soft Freezing	-	-	-	-	-
Door Alarm	•	•	•	•	•

All models and specifications in content are subjected to change without prior notice. Illustration of products depicted are for reference only. Colour tone of actual products may differ from those shown in this catalogue. Every effort has been made to check for accuracy.

# Specifications

## Hybrid Series



MODEL			MR-HGS52EX-P	MR-F62EX-P	MR-FS51EX-P	MR-FX47EX-P	MR-FC34EX-P
Capacity (Litre)	Freezer Room	Net	158	148	102	98	72
	Refrigerator Room	Net	263	357	311	278	216
	Vegetable Room	Net	-	-	-	-	-
	Total	Net	421	505	413	376	288
	Weight (kg)	Net	86	91	77	76	52

Dimension (mm)	Width	699	751	699	699	555
	Height	1720	1777	1820	1720	1693
	Depth	720	795	735	720	662

Cabinet Colours	Class White   Glass Black	Stainless Steel   Brown	Silky Silver	Class White   Glass Black	Matte Black
Cooling System	Multi Airflow	Multi Airflow	Multi Airflow	Multi Airflow	Fan Cooling
Vitamin Factory	•	•	•	•	•
Auto Ice Maker	•	-	-	-	-
Neuro Inverter	•	•	•	•	•
Deodorizer Filter	•	•	•	•	•
Blue Catalyst Filter	•	-	•	-	-
Minus Ion	-	•	•	•	-
Tempered Glass Shelf	•	•	•	•	•
LED Lighting	•	•	•	•	•
Glass Door	•	-	-	•	-
Supercool Chilling	-	-	-	-	-
Soft Freezing	•	-	•	-	-
Door Alarm	•	•	•	•	-

All models and specifications in content are subjected to change without prior notice. Illustration of products depicted are for reference only. Colour tone of actual products may differ from those shown in this catalogue. Every effort has been made to check for accuracy.



**MITSUBISHI ELECTRIC ASIA PTE LTD**

307 Alexandra Road, Mitsubishi Electric Building, Singapore 159943

Tel: (65) 6470 2308 | Showroom: (65) 6473 8944

Opening Hours: 8:30am - 5:30pm (Monday - Friday, closed on Public Holidays)

[www.MitsubishiElectric.com.sg](http://www.MitsubishiElectric.com.sg)

You may wish to contact our dealer at: